

# B250026

# PI35



- ▶ 主要技术特性 (Main Specifications)
- ▶ 适用导线规格 (Applicable wire) : AWG28#~22#
- ▶ 适用基板厚度 (Applicable PC board thickness) : 1.2mm~1.6mm
- ▶ 温度范围 (Temperature range) : -25°C~+85°C
- ▶ 额定电压 (Voltage rating) : 250V AC, DC
- ▶ 额定电流 (Current rating) : 2A AC, DC
- ▶ 接触电阻 (Contact resistance) :  $\leq 0.02\Omega$
- ▶ 绝缘电阻 (Insulation resistance) :  $\geq 1000M\Omega$
- ▶ 耐压 (Withstanding voltage) : 1000V AC/minute

### 材料及电镀规格 Material and Finish

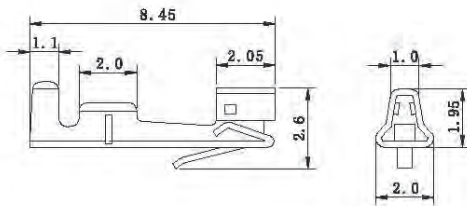
型号 Type	材料 Material	材料厚度 Material Thickness	电镀规格 Finish
插座 WAFER	塑胶 HOUSING	PBT UL94V-0	N/A
	针 PIN	黄铜 Brass	镀锡 Tin-plated
孔座 HOUSING	PA66 UL94V-0	—	N/A
端子 TERMINAL	锡青铜 Phosphor bronze	0.2mm	镀锡 Tin-plated

### 产品尺寸图 Product size chart

 单位: mm 一般公差:  $\pm 0.20$ 

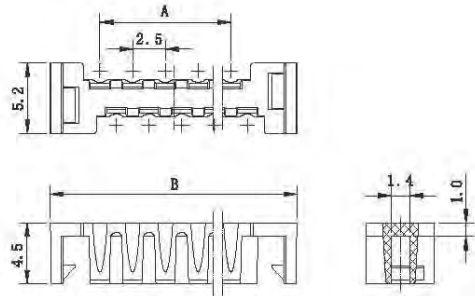
### TERMINAL

B250026-4 PI35-Y



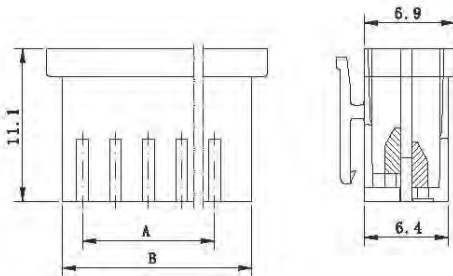
### HOUSING

B250026-5



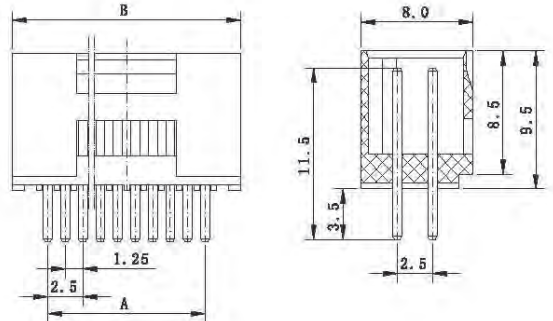
### HOUSING

B250026-2



### WAFER

B250026-1



**B250026****PI35**

## HOUSING

极数 Circuits	型号 Type	尺寸(Dimensions)mm		备注型号 P. S. Type
		A	B	
8	B250026-5-08	7.5	16.3	PI35-08RST
10	B250026-5-10	10.0	18.8	PI35-10RST
12	B250026-5-12	12.5	21.3	PI35-12RST
14	B250026-5-14	15.0	23.8	PI35-14RST
16	B250026-5-16	17.5	26.3	PI35-16RST
18	B250026-5-18	20.0	28.8	PI35-18RST
20	B250026-5-20	22.5	31.3	PI35-20RST
22	B250026-5-22	25.0	33.8	PI35-22RST

## HOUSING

极数 Circuits	型号 Type	尺寸(Dimensions)mm		备注型号 P. S. Type
		A	B	
8	B250026-2-08	8.75	11.7	PI35-08Y
10	B250026-2-10	11.25	14.2	PI35-10Y
12	B250026-2-12	13.75	16.7	PI35-12Y
14	B250026-2-14	16.25	19.2	PI35-14Y
16	B250026-2-16	18.75	21.7	PI35-16Y
18	B250026-2-18	21.25	24.2	PI35-18Y
20	B250026-2-20	23.75	26.7	PI35-20Y
22	B250026-2-22	26.25	29.2	PI35-22Y

## WAFER

极数 Circuits	型号 Type	尺寸(Dimensions)mm		备注型号 P. S. Type
		A	B	
8	B250026-1-08	8.75	13.7	PI35-08A
10	B250026-1-10	11.25	16.2	PI35-10A
12	B250026-1-12	13.75	18.7	PI35-12A
14	B250026-1-14	16.25	21.2	PI35-14A
16	B250026-1-16	18.75	23.7	PI35-16A
18	B250026-1-18	21.25	26.2	PI35-18A
20	B250026-1-20	23.75	28.7	PI35-20A
22	B250026-1-22	26.25	31.2	PI35-22A